

# TuffTrak<sup>®</sup>

Ground Protection Solutions

## BRAND OVERVIEW BROCHURE



TuffTrak<sup>®</sup> XL Solid Composite Heavy Duty Road Mat

## HEAVY DUTY TEMPORARY ACCESS MATTING

Manufactured from specially formulated blends of High Molecular or Ultra High Molecular Weight Polyethylene (HMWPE or UHMWPE), our heavy duty mats are tough and durable. The heavy duty range of connection systems includes seamless interlocking overlaps and Four3™ connectors, allows creation of a sturdy and secure working platform. TuffTrak® heavy duty matting features a rugged Chevron traction® surface providing superior grip, creating safe walkways, roadways and working platforms suitable for use in the most extreme conditions.

### TUFFTRAK® XT

Model # TTXT



- 13'1" x 6'5" x 3.5"
- Weight 794 lbs
- Pure compressive load capacity 600 psi\*
- 50 mats per truck
- Robust Four3™ connectors
- 8" overlap on all sides

### TERRAROAD®

Model # TR1



- 10'1" x 7'4" x 3.25"
- Weight 453 lbs
- Pure compressive load capacity 600 psi\*
- 85 mats per truck
- Conical underside with interlocking overlaps
- Built-in camlock connectors

### TUFFTRAK® XL+

Model # TTXL+



- 13'4" x 6'6" x 1.8"
- Weight 794 lbs
- Pure compressive load capacity 150 tons\*
- 60 mats per truck
- Four3™ stubby connectors
- 8" overlap on all sides

### TUFFTRAK® XL

Model # TTXL



- 13'4" x 6'6" x 1.8"
- Weight 794 lbs
- Load bearing capacity 150 tons\*
- 50 mats per truck
- Solid one piece construction

### TUFFTRAK® ST

Model # TTST



- 9'8" x 8'2" x 1.5"
- Weight 650 lbs
- Load bearing capacity 150 tons\*
- 80 mats per truck
- Low profile traction surface on reverse
- Various connector options

## OUTRIGGER CRANE PADS

TuffTrak® heavy duty outrigger crane pads come in a wide range of standard sizes or can be custom designed, including bespoke colour and logo / company name engraving. Made from either High Density / Ultra High Molecular Weight Polyethylene or composite fiberglass for superior strength, TuffTrak® outrigger pads will not splinter or absorb water. They are strong and durable, chemical and oil resistant, and easy to clean.



### OUTRIGGER PADS

Model # ZSP-OP60-6



- Square or round
- Convenient carry handles
- Rugged construction for a long service life
- Customizable colours and with your company branding and logo



## MEDIUM DUTY TEMPORARY ACCESS MATTING

Manufactured from 100% recycled High Density Polyethylene, our medium duty matting solutions are ideal for traffic and pedestrian use within construction, transmission, events, landscaping, or for temporary access.

### ALTURNAMAT®

Model # AM48

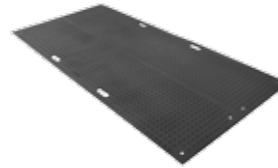
- Standard 96" x 48", 86 lbs
- Core thickness 0.5"
- Load bearing 120 tons\*
- Range of sizes available
- Alturnatread™ with low profile VersaTread™ on the reverse
- Available in black, white or clear
- Optional hand holes



### TRAKMAT®

Model # TM4496

- Standard Standard 96" x 22", 39 lbs
- Overall thickness 0.5"
- Load bearing 90\* tons
- 3 sizes options
- Available in black and green



### EUROMAT®

Model # EM

- 47" x 95", 77 lbs
- Core thickness 0.5"
- Load bearing 80 tons\*
- Chevron traction® with Micro Traction™
- Sandblast finished recycled or virgin material
- Pedestrian surface available



### LIBERTYMAT™

Model # LIB48

- 47" x 95", 77 lbs
- Core thickness 0.5"
- Load bearing 80 tons\*
- Chevron traction®
- Textured finish



### ECONOMATMB™

Model # EC

- 96" x 48", 70.5lbs
- Overall thickness 0.5"
- Load bearing 15 tons\*
- Embossed non-slip traction surface



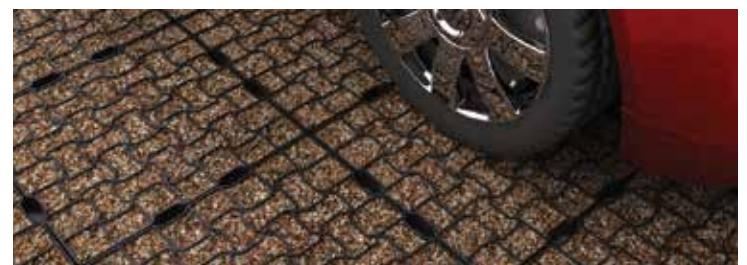
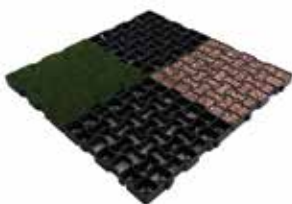
## CELLULAR PAVING SYSTEMS

GeoGrid is a ground reinforcement and stabilisation grid which is ideal for integration into a sustainable urban drainage system (SUDS). Manufactured from 100% recycled High Density Polyethylene, GeoGrid is fast and simple to install with interlocking connectors.

### GEOGRID PAVING

Model # GEO

- Available in Standard or Premium depending on weight load requirements
- 19.5" x 19.5" x 1.6"
- Available with hi-vis demarcation blocks
- Pre-connected using 4 tiles in 1m<sup>2</sup> grids



\* Load bearing capacity is dependent on ground conditions. Sizing is subject to a manufacturing variance of +/- 5%.



TuffTrak® offers a full range of market leading composite ground protection mats delivering a safer work environment for temporary access roadways, trackways, and working platforms.

Tel: (814) 758-7694

E-mail: [sales@tufftrak-safety.com](mailto:sales@tufftrak-safety.com)

[www.tufftrak-safety.com](http://www.tufftrak-safety.com)

A PRODUCT OF:



For more information visit: [www.checkers-safety.com](http://www.checkers-safety.com)

Checkers Safety Group is committed to providing revolutionary product designs and visionary safety solutions that protect people, assets, and the environment.

CHECKERS' FAMILY OF BRANDS:

