

LINEBACKER®

CABLE MANAGEMENT

BRAND OVERVIEW

BROCHURE



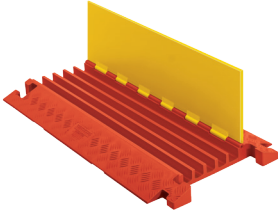
CABLE PROTECTION

Checkers manufactures the most extensive line of high performance cable protection products in the world. These durable systems protect valuable electrical cables, cords and hose lines from damage while providing a method of safe passage for pedestrian traffic, vehicles and heavy duty equipment.

LINEBACKER SERIES

Model # CP5X125

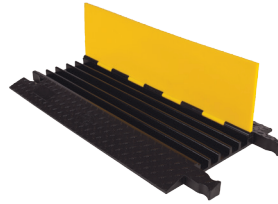
- T-Connector
- Checkers' most robust cable protection option
- High load-bearing capacity
- Ideal for: Mining, Oil & Gas, Military, Industrial Applications



YELLOW JACKET SERIES

Model # YJ5-125

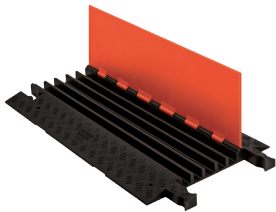
- Dog Bone Connector
- The "original" cable protector for over 30 years
- For heavy traffic areas
- Ideal for: Mining, Manufacturing, Material Handling, Construction



GUARD DOG SERIES

Model # GD5X125

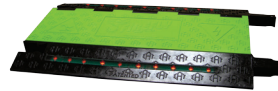
- Dog Bone Connector
- Patented 5-bar tread surface
- Includes four through-holes for temporary mounting
- Ideal for: Entertainment, Sporting Events, and Public and Commercial Applications



FIREFLY SERIES

Model # FF5X25

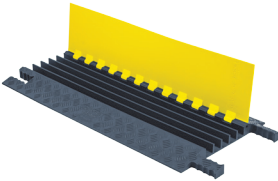
- Dog Bone Connector
- High-visibility lid colors
- Battery-powered LED lights built in to side ramps
- Protects cables and hoses up to 1.325" outside dia.
- Ideal for: Entertainment



GRIP GUARD SERIES

Model # GG5X125

- Gripper Connector
- Lightweight construction - only weighs 12.75 lbs.
- Snap Fit™ hinged lid
- Ideal for: Public Entertainment Venues, and Light Commercial applications



FASTLANE SERIES

Model # FL1X1.5

- L-Connectors
- Easy drop over design
- Patented 5-bar tread surface for maximum traction
- Ideal for: Lightweight vehicles and Pedestrian Traffic

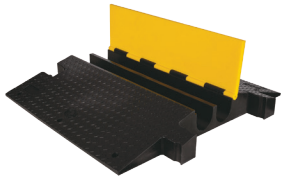


HOSE PROTECTION

Provide protection for valuable cable and hose lines while ensuring a safer method of passage for vehicles. High density, all-weather polyurethane construction protects lines up to 6.5 inches in diameter from damage by physical pressure and reduces cable and hose maintenance and replacement costs. The lightweight, modular design of interlocking 16 inch wide sections provides multi-length flexibility.

EXTREME CROSSOVER SYSTEM

Model # YJ2-400



- Protects cables & hoses
- Made from durable urethane that withstands over a million pounds gross vehicle weight
- Impact and abrasion resistant to trucks and falling rock
- Eliminates trenching cables



DIAMOND BACK HOSE BRIDGE SYSTEM

Model # UHB4045

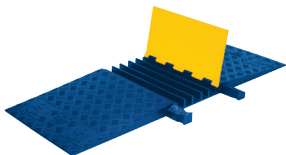
- High density polyurethane construction
- Single or multiple tunnel systems available
- Multiple sizes for various hose & cable diameters
- Modular interlocking design

ADA/DDA ACCESSIBILITY RAMPS

Accessibility ramp system is manufactured to meet ADA and DDA compliant specifications and provides a safer crossing for vehicle and pedestrian traffic while protecting valuable electrical cables and hose lines. The gradual slope and slip-resistant surface ensure a safer crossing point for wheelchairs, carts, forklifts, vehicles with small wheels and heavy trucks.

YELLOW JACKET SERIES ADA/DDA

Model # YJ5-125-ADA



- Protects cables and hoses up to 1.325" outside dia.
- ADA/DDA accessibility ramps built in
- Connects directly to a Standard Ramp 5-Channel Yellow Jacket Cable Protector with Dog Bone Connector

ACCESSIBILITY RAMPS

Model # CPRP-GD3



- Patented, modular ADA/DDA Compliant ramps
- Allows easy access to cables and cords
- Ramps can be added as needed
- One person installation - no tools required

AMS ACCESSIBILITY RAMPS

Model # AMS KIT 1



- Sectioned into pieces for easy setup and transport
- Features bright yellow ramps for easy visibility
- Includes blue ADA side ramps to eliminate ramp dropoff





LINEBACKER®

620 Compton St
Broomfield, CO 80020

PHONE: (800) 438-9336

FAX: (720) 890-4858

EMAIL: sales@checkers-safety.com

www.linebacker-safety.com

A PRODUCT OF:



For more information visit: www.checkers-safety.com

Checkers Safety Group is committed to providing revolutionary product designs and visionary safety solutions that protect people, assets, and the environment.

CHECKERS' FAMILY OF BRANDS:

