

ENTERTAINMENT APPLICATIONS



MATS FOR PROFESSIONAL USE



Notrax® is one of the world's largest integrated manufacturers of dust control and industrial floor mats for professional use. Our commitment is to make quality products and to continue looking for innovative ways of serving our customers. Notrax® mats are manufactured for industrial and commercial environments and are subject to rigorous testing for safety, quality and durability according to American and European quality norms and standards. Notrax® provides innovative matting solutions for ergonomics, slip prevention, cleaning and hygiene, ESD, health and safety for manufacturing, janitorial, food service, production, logistics, education, health care, events and entertainment, and many more industries.

QUALITY TURF PROTECTION



Modern stadiums and arenas have a pre-requisite to be multi-purpose, drawing in additional revenue by keeping the facility working constantly. stadium and arena managers, turf managers, and event directors have a common goal when it comes to turf protection: to source a quality solution that allows multi-use while fully protecting their most valuable asset, the turf, from the rigours of hordes of patrons and hundreds of tons of equipment. Having pioneered the first protection system back in 1991, Terraplas® continues to lead the industry through continuous innovation in cutting-edge design, production and material technology. Terraplas® is deservedly the internationally recognised generic term for turf protection, with virtually every system sold since 1991 still in use today.

GROUND PROTECTION



Ground protection mats are a critical safety solution in the entertainment, oil & gas, transmission, and landscaping industries. TuffTrak® mats are manufactured from composite material, giving them longer lifespans than wood options. Featuring both heavy duty mats capable of supporting cranes, semi trucks, and other heavy equipment, as well as light duty access mats for pedestrians and utility vehicles, the TuffTrak® line is diverse enough to provide a ground protection solution for any application. Don't let soft and sensitive grass or turf derail projects; TuffTrak® mats keep both vehicles and people moving while protecting the ground below.

MOTION SAFETY



The Monster brand deals with safety products for "motion related" activities, such as vehicular and pedestrian traffic safety. Monster encompasses a wide variety of products, including wheel chocks, warning whips, barricade lights, industrial beacons and strobes, parking lot safety solutions, vehicle identification signs, and composite cribbing. These products are manufactured with high quality materials and sound methods, allowing Checkers to create the most durable safety solutions in the industry. Monster parking lot safety solutions, including parking curbs, speed bumps, and speed humps, are designed with premium durable rubber which allows these products to outlast and outperform the competition. These products are great for temporary or permanent parking installations, and are designed to make event traffic safer.

CABLE PROTECTION



The Linebacker® brand is focused on cable management systems, cable ramps, and hose bridges. Cable management systems are used in a multitude of industries to prevent damage to cables and hoses as well as to protect pedestrians and vehicles from being exposed to the cables. Linebacker® cable protectors feature a durable polyurethane construction that is simultaneously stronger and lighter weight than similar rubber or metal products. This portability makes setting up Linebacker® cable protectors simple and easy, while the durability gives the products a much longer life span. Linebacker® offers solutions for a variety of applications, ranging from heavy duty mining to indoor office applications. While many models feature hinged lids, drop over, open top, and low profile models are also available, ensuring that Linebacker® has a solution for every type of cable and application.



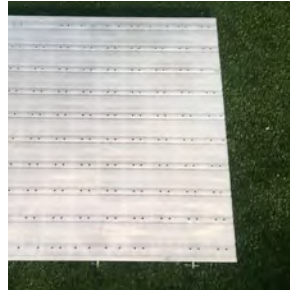
TURF PROTECTION

The Terraplas® product range is recognised internationally as the only real solution for stadiums and arenas wishing to make their venue truly multi-purpose by protecting their grass for events such as concerts, exhibitions, dinners, graduations and religious ceremonies. Due to its unmatched performance, Terraplas® has become the generic term for 'turf protection'.



TERRATRAK PLUS

- Driveable stadium access
- Technically designed internal structure for the strongest stadium flooring solution available
- Connecting bolts & camlocks made from Nylon66 – extremely strong



TERRAPLAS

- Translucent design with special air holes allows grass to continue to grow while covered
- Integrated anti-slip top surface
- Proven life expectancy in excess of 25 years
- Round patented feet spread the load preventing turf damage



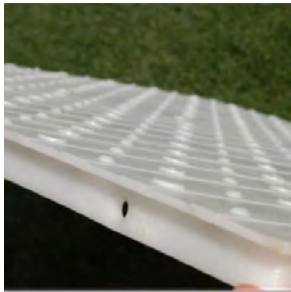
TERRATRAK WF/NF

- WF (with feet) for natural grass; NF (no feet) for artificial/synthetic turf
- Interlocking design prevents harmful liquids from reaching grass or turf
- Circular radiused ribbing geometry provides unparalleled strength



TERRAPLAS HD

- Heavier duty version of the classic Terraplas tile to allow vehicle access
- Locks directly to terraplas®
- Integrated anti-slip top surface
- Solid base with specially designed inserts increases load capacity
- Structural foam injection moulded



TERRAFLOOR

- Integrated anti-slip top surface
- Specially designed air holes allow grass to breathe, while keeping liquids out
- For use on both natural grass & artificial turf.
- Optimum panel size for transporting for rentals etc.



TERRACOVER V

- Specially designed for use on artificial turf
- Twin sheet-thermoformed
- Speed and ease of install and removal
- Bears the weight of forklifts, trucks, and cherry pickers



TERRATURF

- HDPE Snap together system
- Pinned into optimum panel size for fast efficient fitting and maintaining pre-pinned format during lifting
- Translucent material with special air holes
- Tiles overlap avoiding fluids passing to the ground



TERRATILE

- Patented rounded feet distribute the load, preventing turf damage
- High density polyethylene construction
- Circular ribbing for extra strength
- Translucent material with special air holes allows the passage of light, keeping grass from discoloring

CABLE PROTECTION

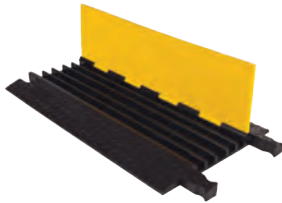
LINEBACKER[®]

CABLE MANAGEMENT

Checkers manufactures the most extensive line of high performance cable protection products in the world. These durable systems protect valuable electrical cables, cords and hose lines from damage while providing a method of safe passage for pedestrian traffic, vehicles and heavy duty equipment.

YELLOW JACKET SERIES

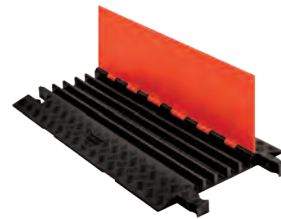
Model # YJ5-125



- Introduced over 30 years ago, the “original” cable protector
- Dog Bone Connectors to extend to any length
- Recommended for applications with heavy volume vehicle traffic

GUARD DOG SERIES

Model # GD5X125



- Checkers’ most versatile option
- For pedestrian traffic and over-the-road vehicles
- Ideal for: Utility, Industrial, Entertainment

FASTLANE SERIES

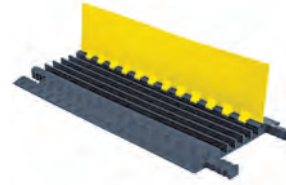
Model # FL2X1.75



- Fast drop-over installation
- Compact, low profile design
- 1 and 2 Channel options

GRIP GUARD SERIES

Model # GG5X125



- Lightweight construction - only weighs 12.75 lbs.
- Gripper Connectors to extend to any desired length
- Snap Fit™ hinged lid for easy cable placement

FIREFLY SERIES

Model # FF5X125



- High-visibility lid colors
- Battery-powered LED lights (red or blue) built in to side ramps
- Interconnects directly to a standard cable protector with a Dog Bone Connector

TRANSPORT CARTS

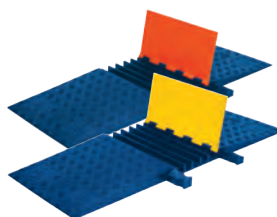
Model # CT4W-ST



- Easy way to transport and store up to 10 cable protectors
- Includes front wheel locks
- Durable black powder-coat paint finish
- Rugged, tubular steel frame

YELLOW JACKET AND GUARD DOG SERIES ADA

Model # YJ5-125-ADA



- ADA/DDA accessibility ramps built in
- Dog Bone Connector
- Reinforced hinged lid for easy cable placement

AMS ACCESSIBILITY RAMPS

Model # AMS KIT 1



- Sectioned into pieces for easy setup and transport
- Features bright yellow ramps for easy visibility
- Includes blue ADA side ramps to eliminate ramp dropoff

ENTERTAINMENT APPLICATIONS



MATS FOR PROFESSIONAL USE

MATS FOR PROFESSIONAL USE

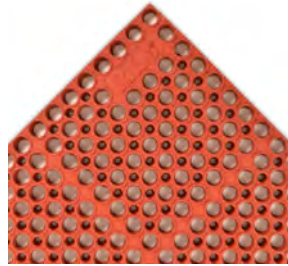
Notrax® mats are top end matting solutions designed for comfort, cleanliness, and facility protection. With a wide variety of products available, we have a mat to suit your needs. From anti-fatigue matting to food service matting, our products span a diverse group of industries and applications.



ANTI-FATIGUE MATTING

Model # 440

- Ergonomic foam mats great for booth vendors
- Can easily be hosed off and swept clean
- Lightweight, can be moved/handled easily



FOOD SERVICE MATTING

Model # 543

- Solid or drainage mats available for kitchen areas or food vendors
- Made from a heavy-duty rubber compound that is resilient to most oils and greases



SABRE™

Model # 130

- Provides moisture and dirt retention at entrances, lobbies, and walkways
- Vinyl backing reduces mat movement
- Blends style with functionality



ENTRANCE MATTING

Model # 193

- Dye injection manufacturing process ensures long lasting and vibrant colors
- Heavy duty vinyl backing creates friction and prevents sliding
- Made from high quality fiber



PARKING SAFETY SOLUTIONS



Monster traffic safety products are efficient, high quality parking lot safety solutions. Designed for speed reduction, these solutions keep roads and parking lots safe for both motorists and pedestrians. Monster speed bumps, speed humps, and car stops are long lasting, easy to install, and environmentally friendly.



PARKING STOP

Model # 16101Y

- Helps protect the front of vehicles
- Prevents damage to structures
- Highly visible & extremely durable
- Ideal for indoor or outdoor residential parking



SPEED HUMP

Model # 23500V

- Slows traffic to 10-15 mph
- Interlocking design expands to any road width
- Maintains continuous traffic flow
- Made from vulcanized rubber
- Anti-skid surface



SPEED BUMP

Model # 26111

- Slows traffic to 2-5 mph
- Made from 100% recycled tires
- In-molded reflective tape and cat eye reflectors enhance visibility
- Can be installed for temporary or permanent use



PREMIUM BARRICADE LIGHTS

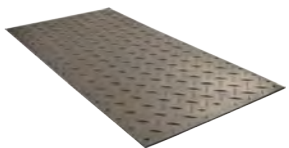
Model # BR3.D.D3.YA

- Built with 4 premium LED's
- Tough housing made from all-weather polypropylene
- Highly efficient circuitry increases battery life up to 8 months of steady mode operation

GROUND PROTECTION



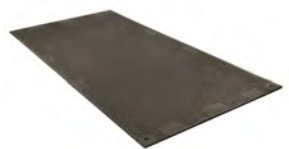
Whether you need to protect sensitive turf, or provide extra traction, TuffTrak® ground protection solutions have you covered. TuffTrak® mats can be connected together to form roadways or walkways, and with a wide variety of traction patterns, weights, and designs, they are applicable to nearly every industry.



ALTURNAMAT

Model # AM48

- Bold cleat tread for great traction
- Mats can be locked together with Turn-A-Links forming a continuous roadway
- Translucent material available to allow sunlight to reach grass



VERSAMAT

Model # VM48

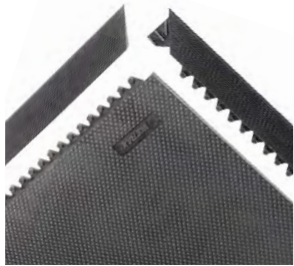
- Flat tread design is easy to walk on
- Virtually eliminates ground restoration costs from vehicle damage
- Easy to handle



ENTERTAINMENT APPLICATIONS

ICE ARENA PRODUCTS

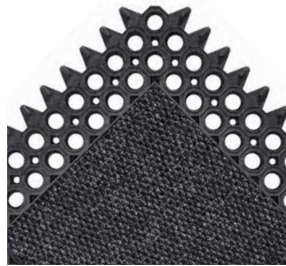
Notrax® mats are top end matting solutions designed for comfort, cleanliness, and facility protection. With a wide variety of products available, we have a mat to suit your needs. From anti-fatigue matting to food service matting, our products span a diverse group of industries and applications. Additionally, Terraplas®' strategically designed ice conversion cover provides a highly insulated solution for multi-purpose ice rinks.



SLABMAT CARRE™

Model # 040

- Built with indestructible rubber
- Shock absorbing construction
- Modular design allow for on-site customization
- Textured top surface for traction



MASTER FLEX C12™

Model # 593

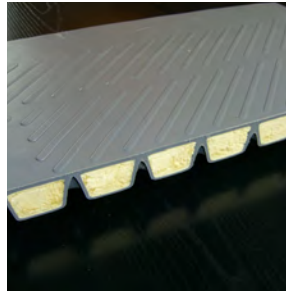
- Durable rubber construction
- Fibers scrape debris, while drainage holes remove moisture
- Suitable for use in extreme weather
- Overall thickness: 1/2"



SKATE-SPIKE MATTING

Model # 035

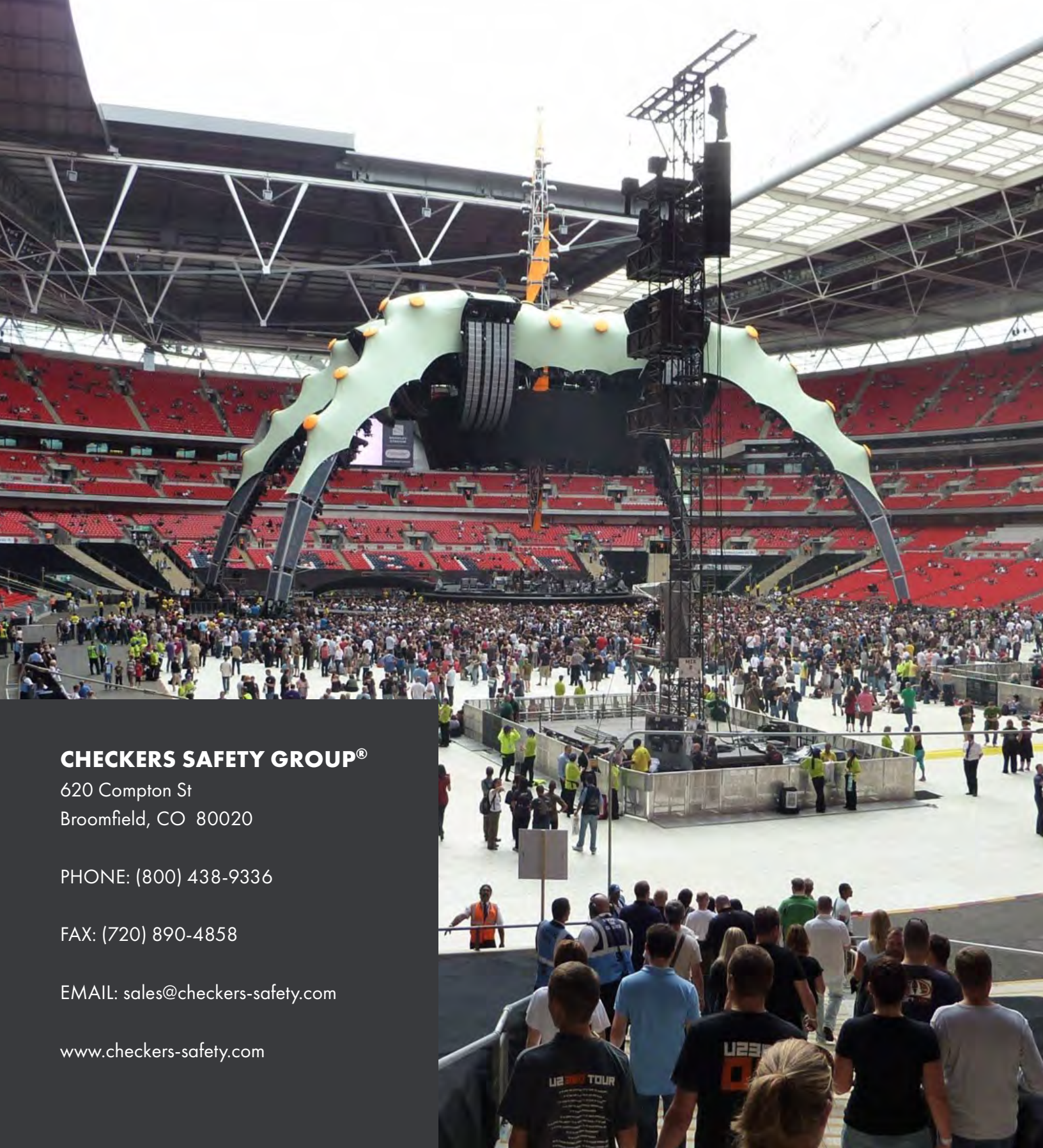
- Vinyl runner that protects floors from spikes or skates
- Made with a durable, linear ribbed top surface
- Custom Size: Available in 3' width (up to 75')



TERRACOVER ICE

- Filled with polyurethane foam for optimal insulation
- Tiles interlock and overlap
- Performance enhancing coned underside
- Anti-slip top surface
- Bears the weight of forklifts, trucks, and cherry pickers





CHECKERS SAFETY GROUP®

620 Compton St
Broomfield, CO 80020

PHONE: (800) 438-9336

FAX: (720) 890-4858

EMAIL: sales@checkers-safety.com

www.checkers-safety.com

A PRODUCT OF:



For more information visit: www.checkers-safety.com

Checkers Safety Group is committed to providing revolutionary product designs and visionary safety solutions that protect people, assets, and the environment.

CHECKERS' FAMILY OF BRANDS:

