



MILITARY

APPLICATIONS



MATS FOR PROFESSIONAL USE



Notrax® is one of the world's largest integrated manufacturers of dust control and industrial floor mats for professional use. Our commitment is to make quality products and to continue looking for innovative ways of serving our customers. Notrax® mats are manufactured for industrial and commercial environments and are subject to rigorous testing for safety, quality and durability according to American and European quality norms and standards. Notrax® provides innovative matting solutions for ergonomics, slip prevention, cleaning and hygiene, ESD, health and safety for manufacturing, janitorial, food service, production, logistics, education, health care, events and entertainment, and many more industries.

GROUND PROTECTION



Ground protection mats are a critical safety solution in the military, oil & gas, transmission, and landscaping industries. TuffTrak® mats are manufactured from composite material, giving them longer lifespans than wood options. Featuring both heavy duty mats capable of supporting cranes and other heavy equipment, as well as light duty access mats for trucks and transport equipment, the TuffTrak® line is diverse enough to provide a ground protection solution for any application. Don't let swampy or rugged terrain derail projects; TuffTrak® mats keep both vehicles and people moving with traction patterns designed to maximize grip and safety.

MOTION SAFETY



The Monster brand deals with safety products for "motion related" activities, such as vehicular and pedestrian traffic safety. Monster encompasses a wide variety of products, including wheel chocks, warning whips, barricade lights, industrial beacons and strobes, parking lot safety solutions, vehicle identification signs, and composite cribbing. These products are manufactured with high quality materials and sound methods, which has allowed Checkers to create the most durable safety solutions in the industry. Monster Chocks are known worldwide, and are a staple of every mine site. As the strongest and lightest chock on the market, the Monster Chock makes correct position easy, keeping both people and vehicles safe. Monster whips and signals are long lasting and extremely bright, ensuring visibility and safety. Monster Parking Lot Safety Solutions, including parking curbs, speed bumps, and speed humps, are designed with premium durable rubber which allows these products to outlast and outperform the competition.

CABLE PROTECTION



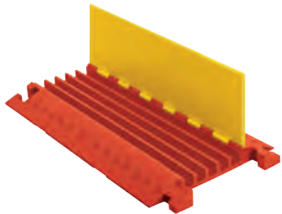
The Linebacker® brand is focused on cable management systems, cable ramps, and hose bridges. Cable management systems are used in a multitude of industries to prevent damage to cables and hoses as well as to protect pedestrians and vehicles from being exposed to the cables. Linebacker® cable protectors feature a durable polyurethane construction that is simultaneously stronger and lighter weight than similar rubber or metal products. This portability makes setting up Linebacker® cable protectors simple and easy, while the durability gives the products a much longer life span. Linebacker® offers solutions for a variety of applications, ranging from heavy duty mining to indoor office applications. While many models feature hinged lids, drop over, open top, and low profile models are also available, ensuring that Linebacker® has a solution for every type of cable and application.

MILITARY APPLICATIONS

LINEBACKER®
CABLE MANAGEMENT

CABLE & HOSE PROTECTION

Linebacker® offers the most extensive line of high performance cable protection products in the world. These durable systems protect valuable electrical cables, cords and hose lines from damage while providing a method of safe passage for pedestrian traffic, vehicles and heavy duty equipment.



HEAVY DUTY SERIES

Model # CP5X125

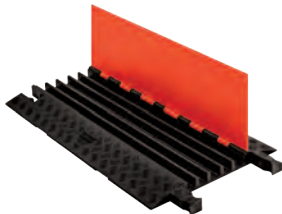
- Checkers' most robust cable protection option
- High load-bearing capacity
- Ideal for: Industrial Applications, Oil and Gas, Mining, Military



YELLOW JACKET SERIES

Model # YJ5-125

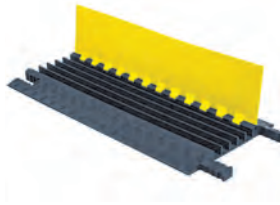
- Dog Bone Connector
- The "original" cable protector for over 30 years
- For heavy volume traffic areas
- Ideal for: Mining, Manufacturing, Material Handling, Construction



GUARD DOG SERIES

Model # GD5X125

- Checkers' most versatile option
- For pedestrian traffic and over-the-road vehicles
- Ideal for: Utility, Industrial, Entertainment



GRIP GUARD SERIES

Model # GG5X125

- Lightweight construction - only weighs 12.75 lbs.
- Gripper Connectors to extend to any desired length
- Snap Fit™ hinged lid for easy cable placement



FASTLANE SERIES

Model # FL2X1.75

- Fast drop-over installation
- Compact, low profile design
- 1 and 2 Channel options



DIAMONDBACK HOSE BRIDGE

Model # UHB4045

- Protects hoses up to 6.5 in.
- Reduces hose maintenance costs
- Ideal for: Mining, Refineries, Industrial, Firefighting Vehicles



WHEEL CHOCKS

Checkers manufactures the world's most extensive line of wheel chocks. Monster wheel chocks comply with the safety requirements for a variety of industries and ensure a safe working environment while your vehicles are at rest. Made with durable urethane, Monster wheel chocks provide a safe chocking solution for any type of vehicle.



HEAVY DUTY CHOCKS

Model # MC3011

- MC Series - used in mines all around the world
- Durable and lightweight
- Ideal for: Heavy Equipment, Haul Trucks, Cranes, Large Military Tactical Vehicles



ALL-TERRAIN CHOCKS

Model # AT3512

- Durable urethane construction
- Recessed carrying handle
- Resistant to oils, and fuels
- High visibility yellow color
- Weather-resistant urethane construction



GENERAL PURPOSE CHOCKS

Model # UC1500

- Durable urethane construction
- Oil and chemical resistant
- Recessed carrying handles
- High visibility orange color
- Available in singles or pairs



RUBBER CHOCKS

Model # RC450

- Highly durable rubber construction
- Resistant to weather elements
- Ideal for smaller vehicles and trailers
- Small design makes for easy storage



AVIATION CHOCKS

Monster aviation chocks include the AC Series, made of highly durable, lightweight polyurethane. AC chocks last longer than wood chocks, never need painting and eliminate Foreign Object Damage threats for aircraft. The AC Series is ideal for private, commercial, cargo and military aircraft.

FOR LARGE AND OVERSIZED AIRCRAFT

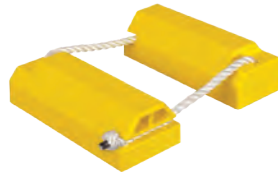
Model # AC6856



- Will not rot, crack or splinter
- Features a rope-lock system
- Optional rope carrying handle for ease of use
- High load-bearing capacity

FOR MID-SIZED TO LARGE AIRCRAFT

Model # AC4614



- Reduces maintenance costs
- Durable and lightweight
- Won't splinter or crack, eliminating Foreign Object Damage

FOR SMALL TO MID-SIZED AIRCRAFT

Model # AC3512



- An updated version of the original wooden design
- Weather and abrasion resistant
- Optional anti-skid pads available for polished hanger floors

FOR SMALL AIRCRAFT

Model # AC201



- Fits the curvature of the tire to absorb wheel-squat
- Features molded-in soft base for increased traction
- Polyester rope lanyard connects chocks



TRAFFIC SAFETY SIGNALS

Using innovative technology and high quality materials, high-visibility Monster barricade lights, beacons, and strobe lights provide superior performance and increased life to reduce replacement costs. Developed with construction and traffic safety professionals, Monster warning lights are designed to withstand the harshest conditions in the field.



SOLAR BARRICADE LIGHTS

Model # BS.D.D1.YR

- 360° LED internal light source increases visibility
- Efficient LED optic lens produces 30% more light output
- Rapidly recharges in 1 hour lasting up to 2 weeks with no sunlight



PREMIUM BARRICADE LIGHTS

Model # BR3.D.D3.YA

- Features 4 premium LED's
- Tough housing made from all-weather polypropylene
- Efficient circuitry increases battery life up to 8 months of steady mode operation



ECONOMY BARRICADE LIGHTS

Model # BC3.AC.D3.YA

- Value priced economy light available in type A/C D-cell and A/C 6 volt
- Battery life of up to 4 months
- 3-way Operation: Steady On, Flashing, or Off



WORK LIGHT

Model # LWL.3.W.R

- 3-Way Operation: Steady On, Flashing, and Off
- Operates from 12-24 volts
- Cast aluminum housings
- Heavy-duty industrial base
- Enclosures are NEMA 4 rated



LED BEACONS

Model # SL.2250.HMA

- Superior performance and exceptional value
- Can be used as a steady burn, non-flashing beacon
- Changeable flash patterns
- UV-stabilized polycarbonate dome



LED STROBES

Model # SL.310.HS.A

- Four different operating patterns
- Ultra high efficiency power supply produces more flashes while reducing power draw
- Available in heavy duty and micro styles

MATS FOR PROFESSIONAL USE



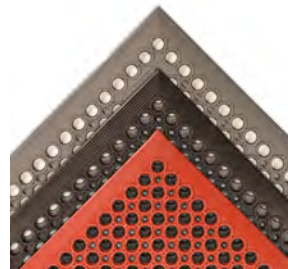
Notrax® mats are top end matting solutions designed for comfort, cleanliness, and facility protection. Anti-fatigue food service matting is ideal for use in mess halls or shoot packing areas, while switchboard matting is design to designed to provide insulation that prevents the worker from being grounded, thereby eliminating the possibility of electrical shock. It is approved for use by the Department of the Navy and all Departments and Agencies of the Department of Defense.



SWITCHBOARD MATTING

Model # 836

- Meets MIL-DTL-15562G specification for insulating switchboard matting
- Slip resistant, fire retardant
- Diamond-plate surface available for added traction



ANTI-FATIGUE MATTING

Model # 550

- Made from tough, heavy-duty rubber compound
- Large hole system drains moisture and debris away
- Modular matting system for on-site custom configurations

WARNING WHIPS

Monster warning whips are designed to increase the visibility of vehicles. Without a whip for extra visibility, large equipment operators can have difficulty seeing these smaller vehicles, potentially leading to accidents. Both lighted and non-lighted models are available, with many different mounting options.



LIGHTED WHIPS

Model # FS8L-O

- The preferred whips around the world
- Features premium, high visibility LEDs
- Weather-resistant resin construction



NON-LIGHTED WHIPS

Model # FSRR7W-HB

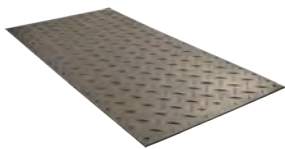
- Seven whip colors to choose from
- Durable nylon-mesh orange flag
- Includes threaded hex mounting base
- Ideal for recreation vehicles



GROUND PROTECTION

Whether you need to protect sensitive turf, or provide extra traction, TuffTrak[®] ground protection solutions have you covered. TuffTrak[®] mats can be connected together to form roadways or walkways, and with a wide variety of traction patterns, weights, and designs, they are applicable to nearly every industry.

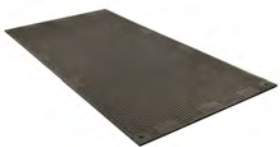
TuffTrak[®]
Ground Protection Solutions



ALTURNAMAT

Model # AM48

- Bold cleat tread for great traction
- Mats can be locked together with Turn-A-Links forming a continuous roadway
- Translucent material available to allow sunlight to reach grass



VERSAMAT

Model # VM48

- Flat tread design is easy to walk on
- Virtually eliminates ground restoration costs from vehicle damage
- Easy to handle





CHECKERS SAFETY GROUP®

620 Compton St
Broomfield, CO 80020

PHONE: (800) 438-9336

FAX: (720) 890-4858

EMAIL: sales@checkers-safety.com

www.checkers-safety.com

A PRODUCT OF:



For more information visit: www.checkers-safety.com

Checkers Safety Group is committed to providing revolutionary product designs and visionary safety solutions that protect people, assets, and the environment.

CHECKERS' FAMILY OF BRANDS:

